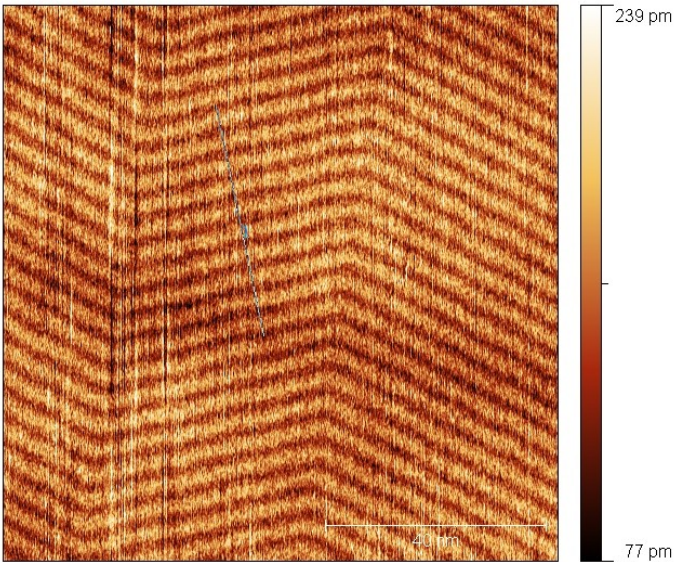
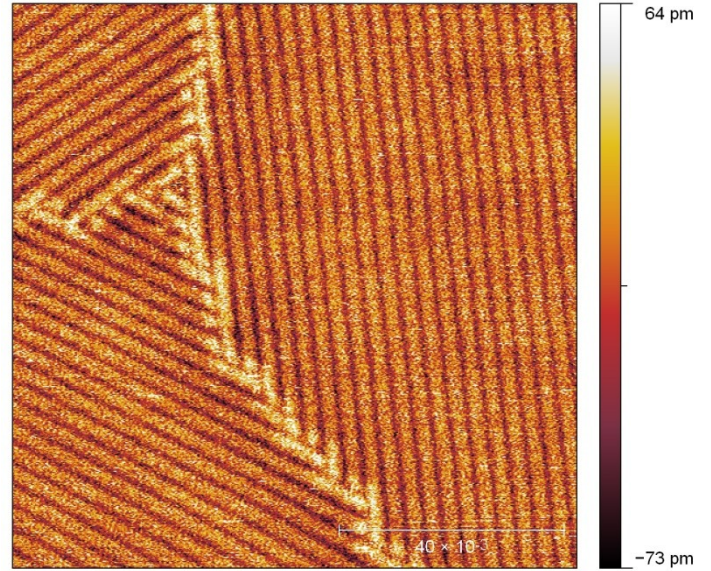


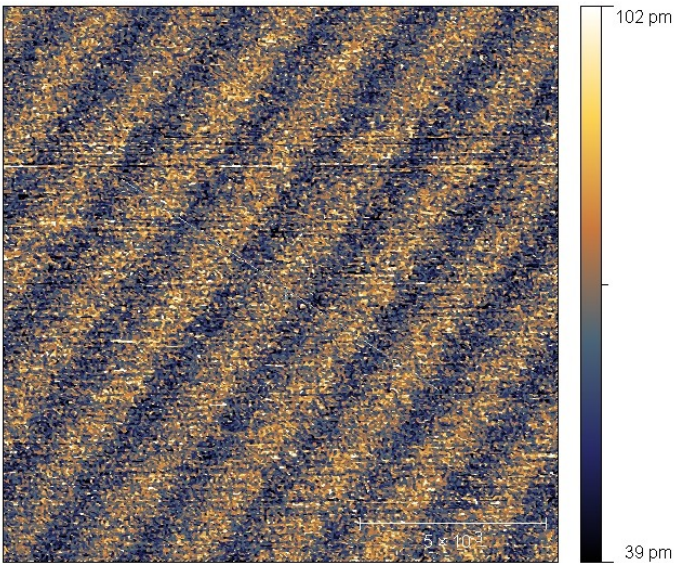
SmartSPM 1000 - Performance Examples



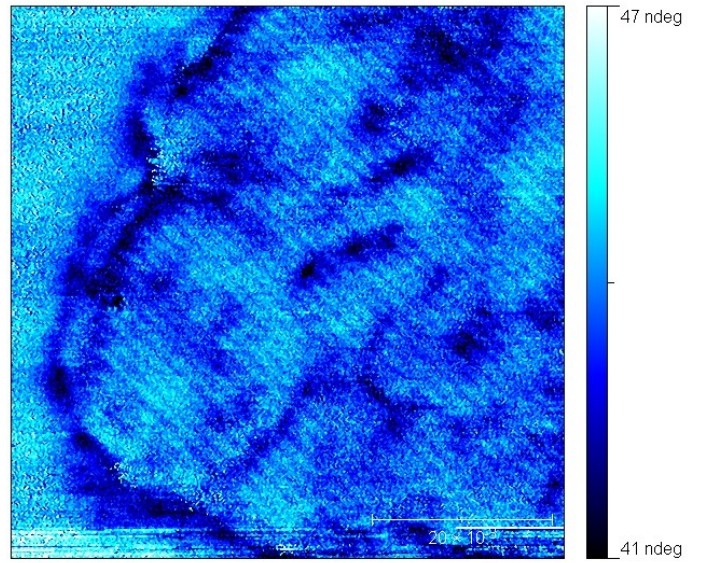
100 nm topography scan of Palmitoyl Palmitate molecules on HOPG. Non contact mode. XY closed loop - ON.



100 nm scan of $C_{28}H_{58}$ molecules on HOPG. Z range- 1.3Å. Non contact mode.



14nm topography scan of $C_{18}H_{38}$ on HOPG.



60nm phase scan of dodecyldiamine on HOPG. The width of lamellae is 1.6 nm.